

# EARLY HEAD START ANNUAL REPORT



**Foothill Family**  
Rooted in caring since 1926

# 2021-2022

---

## FOOTHILL FAMILY'S EARLY HEAD START PROGRAM MISSION

*to provide high quality, strength-based, comprehensive child development services that empower caregivers to enrich the lives of children, families and communities.*

**3**

### PROGRAM OPTIONS

Home-based, Center-based, and Family Child Care

**11**

### CITIES SERVED

Alhambra  
Azusa  
Baldwin Park  
Covina  
Duarte  
El Monte  
La Puente  
Pomona  
Rosemead  
South El Monte  
West Covina



### COMPREHENSIVE SERVICES FOR LOW-INCOME PREGNANT WOMEN AND FAMILIES WITH CHILDREN FROM 0 TO 3 YEARS

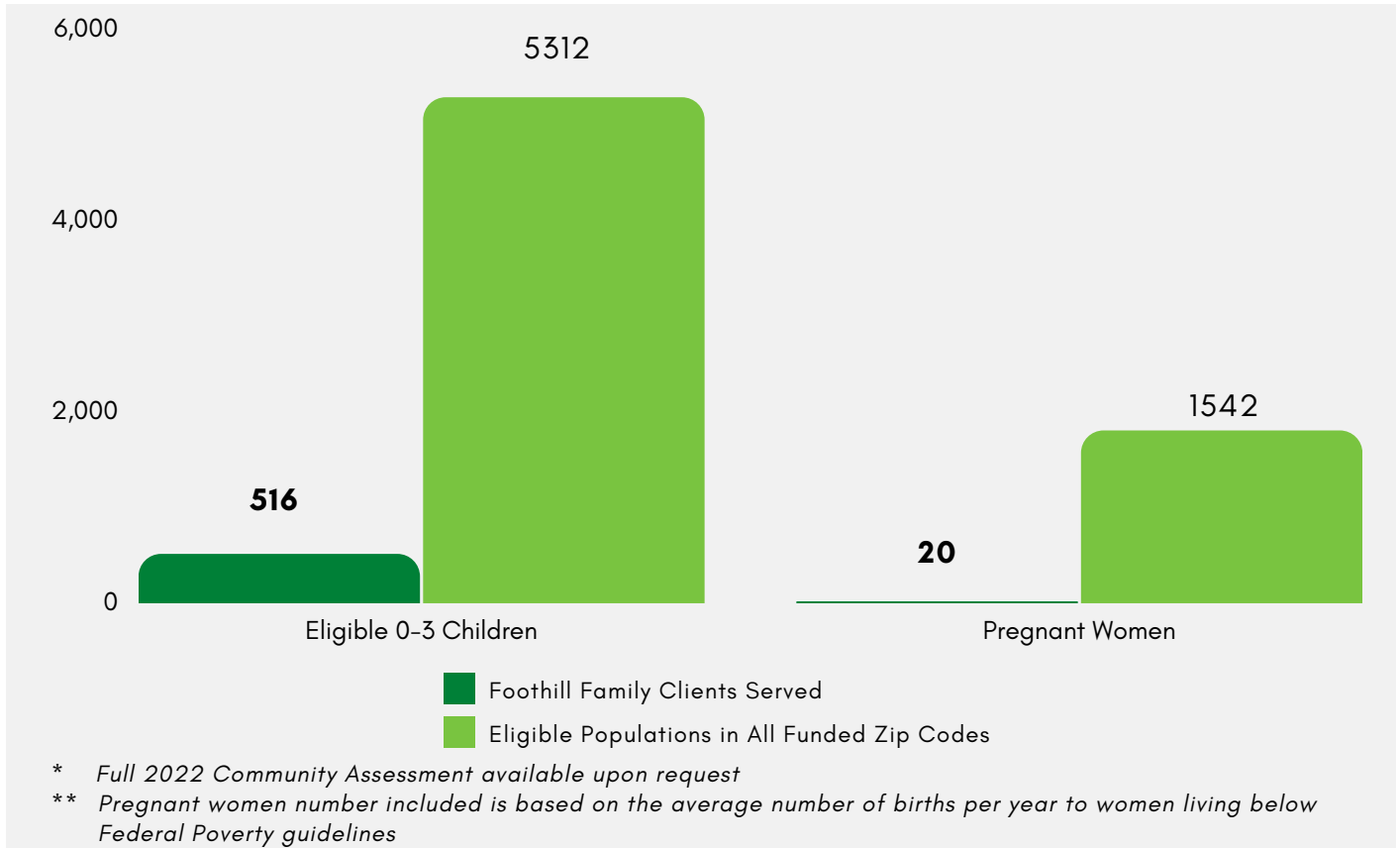
Education and Child Development  
Health Services  
Nutrition Services  
Mental Health/Disabilities  
Family Engagement  
Social Support

Family Child Care and Center-based programs are operated in partnership with local licensed child care providers to provide full day, full year services. Infants and toddlers can receive services up to 36 months in licensed Center-based programs and 48 months in licensed Family Child Care homes.

Foothill Family's Early Head Start (EHS) program utilizes a strength-based, relationship-focused approach toward school readiness through engaging families as full partners in their child's learning and development. Childcare partners are trained in the research-based Creative Curriculum; Home Visitors are certified in the evidence-based Parents as Teachers foundation curriculum. Both are aligned with the Head Start Early Learning Outcomes Framework and the California Infant Toddler Learning and Development Foundations. The Foothill Family EHS program supplements each curriculum with research-based tools and approaches that have proven most effective with EHS children and families.

This Annual Report captures vital program performance indicators during 12 months to capture fiscal year-end data for the Home-Based and Early Head Start-Child Care Partnerships Program.

**TOTAL NUMBER OF ELIGIBLE 0-3 CHILDREN AND PREGNANT WOMEN SERVED IN FUNDED ZIP CODES**



During the 2021 - 2022 program year, only 9.7% of eligible children ages 0-3 were served, and 1.1% of eligible pregnant women were served, which speaks to the great need for Early Head Start services in our funded zip codes.

**ENROLLMENT PROGRAM DATA, JULY 1ST 2021- JUNE 30TH 2022**

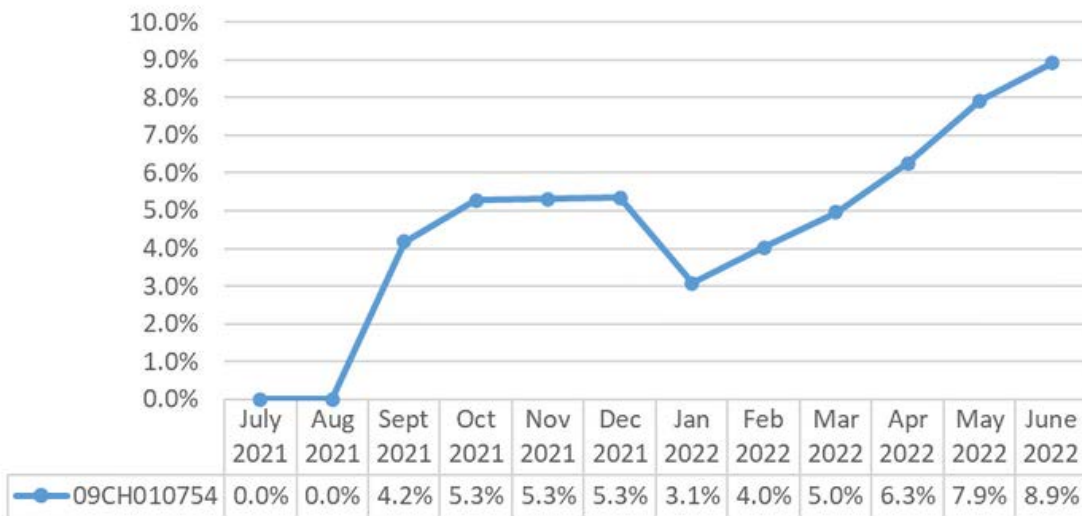
|                            | 09CH010754<br>HB & CCP |
|----------------------------|------------------------|
| AVERAGE MONTHLY ENROLLMENT | 71%                    |
| CUMULATIVE ENROLLMENT      | 536                    |
| NUMBER OF PREGNANT WOMEN   | 20                     |
| NUMBER OF FAMILIES SERVED  | 438                    |

### CHILD HEALTH

#### Up-to-Date on Physical Exams



#### Up-to-Date on Dental Exams

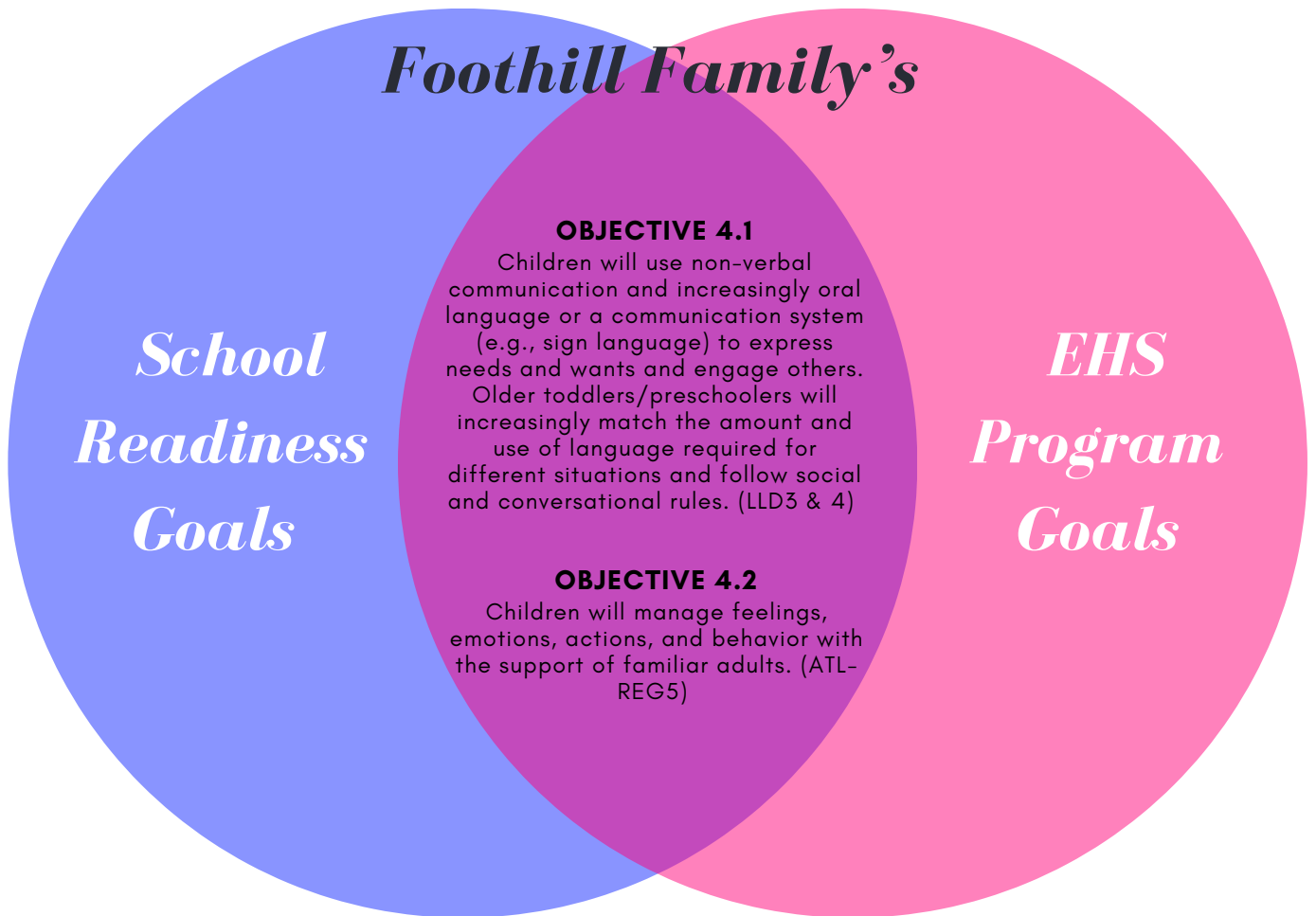


The Foothill Family EHS program recognized the impact of COVID-19 on the completion rate of Well-Baby and Dental examinations. During the program year, families were challenged with following through with scheduled Well-Baby and Dental exams. During the pandemic, families were reluctant to visit the doctor or dentist unless it was an emergency due to the wait time for appointments. Although medical and dental clinics returned to providing in-person services, families shared they found it challenging to develop a routine for doctor and dentist visits. To respond to these challenges, Foothill Family EHS staff provided families with health education on the importance of children being up-to-date on Well-Baby and Dental examinations throughout the program year. Health education was provided to individual families during group connections and parent meetings. The Foothill Family EHS program consulted with the Health Services Advisory Committee (HSAC) for support and strategies to address family challenges to ensure their children were up-to-date on Well-Baby and Dental examinations. One idea offered to the EHS program included working with community partners to create more in-person events for children and families, such as family festivals, to provide health education and resources to families. During outdoor events, the EHS program could partner with other community partners so families can access medical and dental services on the spot. Another strategy the EHS program is excited to implement is supporting our contracted Childcare partners to engage parents in promoting Well-Baby and Dental Examinations at their sites. Childcare Partners can help to identify and address any barriers families may have in ensuring children are up-to-date on their Well-Baby and Dental examinations.

**SCHOOL READINESS**

The Improving Head Start for School Readiness Act of 2007 requires all Head Start and Early Head Start programs to develop school readiness goals. The Head Start Early Learning Outcomes Framework’s (ELOF) infant and toddler guidelines align perfectly with the program’s existing school readiness goals, assessment tools, and early education approach. There are five early learning domains: Language and Literacy; Cognition, Approaches to Learning; Physical Health and Motor Development; and Social and Emotional Development.

Foothill Family’s Early Head Start (EHS) School Readiness Goals are combined with Foothill Family’s EHS Program Goals under Goal #4: (Child Outcomes/School Readiness): All children will have the skills and make gains in their development to succeed in school and life. Centralizing our goals allows the program to evaluate children’s progress across both options using the same measurements between infants/toddlers and preschoolers—a better connection of Child Outcomes and School Readiness progress to other program systems and services.

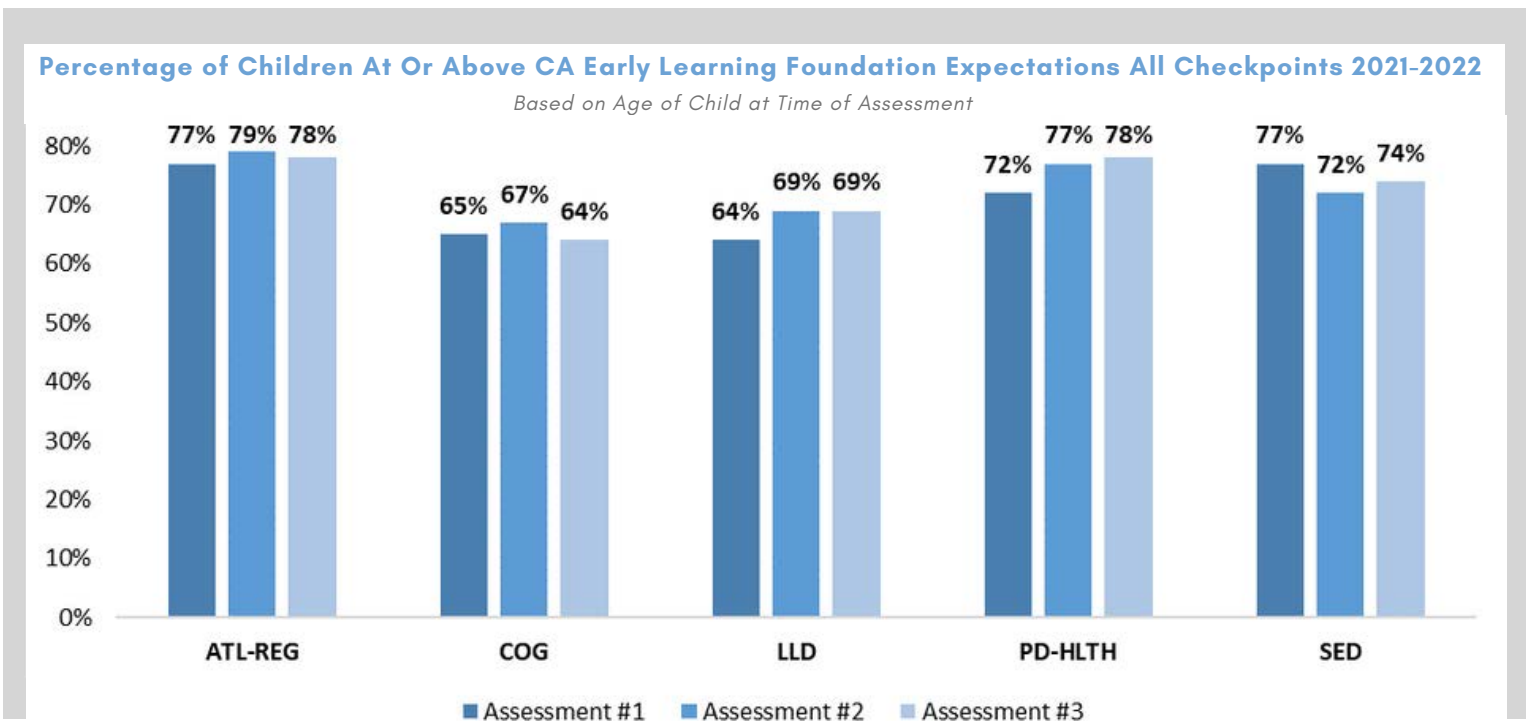


**OFFICE OF HEAD START’S DEFINITION OF SCHOOL READINESS**  
 “..children are ready for school, families are ready to support their children’s learning, and schools are ready for children.”

**DESIRED RESULTS DEVELOPMENTAL PROFILE (DRDP) OUTCOMES  
FOR ALL PROGRAM OPTIONS COMBINED:  
FAMILY CHILD CARE, CENTER-BASED, & HOME-BASED PROGRAM**

During the 2021 - 2022 program year, 51% (131/246) of enrolled children participated in all three Assessment periods (Fall, Winter, and Spring). 22 Center-based, 31 Home-based, and 78 FCC children participated in Assessments #1-#3. In addition, 84% of children are Dual Language Learners, and 10% have an Individualized Family Service Plan (IFSP), meaning they have a developmental delay and receive services from the Regional Center.

The 131 children who were assessed across all three Assessment Periods showed consistent growth across all three periods in the Physical Development and Health (PD-HLTH) domain. The Language and Literacy domain (LLD) remained static across the Winter and Spring. In the rest of the domains, children’s gains decreased between 1% to 3% from Winter to Spring.



\* Full 2022 School Readiness report available upon request

## STAFF PROFESSIONAL DEVELOPMENT

Staff Professional Development remained a top priority for the Foothill Family EHS program. As services continued to be offered through virtual platforms, multiple trainings were offered to help staff improve their remote work, use such services as "Zoom" and "Teams," and increase their technology bandwidth were front and center. Foothill Family's programs teamed together to help our staff detect child safety and other possible risk factors as we continue to provide some hybrid services.

A significant accomplishment for the EHS program was facilitating our "Virtual Conference Style" Pre-Service from June 27th- July 1st, with the last day of the week-long training conducted in person. With the theme of "Rise and Shine," each day had its focus: Staff, Children, Families, Team, and Workspaces. Each day staff had the opportunity to dive into each focus topic through messages from keynote speakers, participating in electives, and breakout role-specific sessions. A total of 12 well-known experts and motivational speakers were invited to teach, coach, and inspire the team to offer our best work when serving children and families.



In alignment with the Head Start Program Performance Standards (HSPPS), Foothill Family EHS continues to utilize a research-based coordinated coaching program using the Practice-Based Coaching (PBC) Model. During the 2021-2022 program year, it was identified that the intensive one-on-one individual coaching model had been a critical component in strengthening our Home Visitor (HV) and Childcare Partners' professional development. Our approach is grounded on collaborative coaching partnerships and data from various sources, including child outcomes, the Home Visiting Rating Scales (HOVRS) observation results, and the Pyramid Infant-Toddler Observation Scale (TPITOS). The data allows us to measure individual staff and Partner needs, set goals, and offer training and support to help a coaching participant achieve desired outcomes for improving effective teaching practices.



# 245

**professional development  
trainings**

for program staff and partners

# 2519

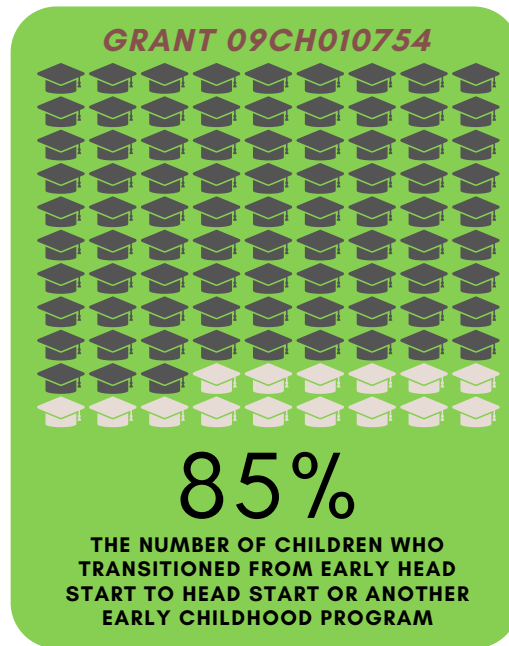
**training hours**

which well exceeded the 15-hour  
Head Start requirement.

## TRANSITIONING CHILDREN TO HEAD START & SERVICES FOR CHILDREN WITH DISABILITIES

The Foothill Family EHS program has continued to build and expand upon successful partnerships with other local Head Start programs and Part C programs in the cities we serve to transition children from Early Head Start to Head Start successfully. The following table details the number of children who successfully transitioned to a Head Start program by grant:

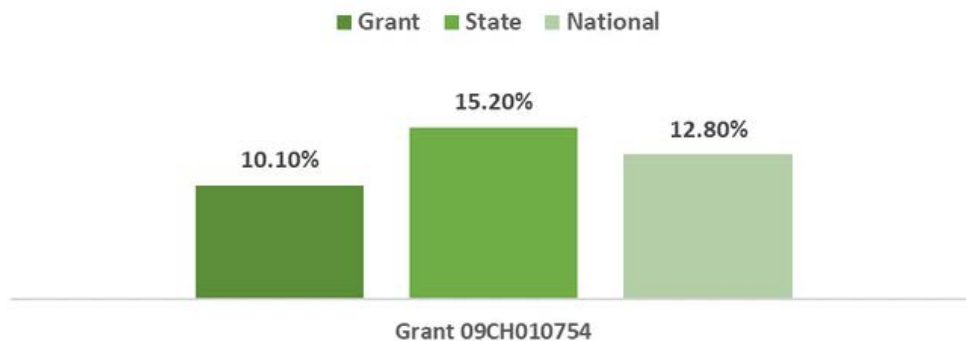
### Of Those Who Aged Out, The Number of Children Who Transitioned From Early Head Start to Head Start or Another Early Childhood Program



\* Information taken from 2021-2022 PIR data. HB- Home-Based; CCP - Child Care Partnerships

Recognizing the high number of children with disabilities served and their needs, EHS continued to work closely with the San Gabriel/Pomona Regional Center (SGPRC) and the East Los Angeles Regional Center (ELARC) to coordinate care for EHS families. The program collaborated with the Regional Center to train our Early Head Start staff on engaging families needing referrals and regularly attended collaboration meetings at SGPRC. Last year, the program served 52 children with an Individualized Family Service Plan (IFSP).

### Percent of Children with Disabilities Served (Grant, State, National)



\* State and national percentages are taken from the 2021 - 2022 Grant State National PIR Indicator



## PARENT, FAMILY & COMMUNITY ENGAGEMENT 2021 -2022 ACCOMPLISHMENTS

Foothill Family EHS believes in building and maintaining strong partnerships with parents. Parents have routinely participated in focus groups and pilot projects to give their first-hand opinions on quality improvement, new ideas on recruitment, and how best to serve children. Parents' and caregivers' voices are valued, and their contributions have made Foothill Family EHS a stronger program.

- Thirty-three families participated in the transition event at the Santa Anita, El Monte office. Families received their certificates of completion during the transition event and a free backpack with school supplies.
- In efforts to connect with the community and strengthen the connection with Covina Development Center, a CCP Center-based partner, staff participated in weekly visits for three consecutive months and participated in three community events, Truck or Treat, Open House, and Back to School Night.
- As a result of community connections and meetings with the Alhambra Unified School district (AUSD), Foothill Family EHS established a partnership with Catalyst, San Gabriel Valley. The organization addresses homelessness for families by providing individualized services through linking families to community resources and linkage. Our Partnership included training and coaching for our staff and more focused assistance while working with families living under challenging circumstances.



- To provide staff with tools and skills to increase monthly social participation and promote father and family engagement, the EHS program partnered with J. Michael Hall, M. Ed., the founder of the fatherhood engagement program Strong Fathers Strong Families, to offer strategies for engaging families while utilizing the zoom platform. Some techniques included using eye-catching marketing materials that include saving the dates, invites, and phone numbers for calls and emails). The Home-based and Child-Care Partnership (CCP) option program provided families with monthly social kits that included developmentally appropriate materials to support parents in becoming advocates and leaders, significantly increasing monthly family social participation. About 139 families participated in the monthly CCP family socials and Home-Based group connections throughout the program year.

### POLICY COUNCIL

The Policy Council (PC) representing the Foothill Family EHS program actively engages in program governance with the Foothill Family Board of Directors. Both groups are involved in a shared decision-making process along with the management staff. 100% of the Policy Council (8/8) consisted of enrolled parents. The PC consisted of eight parents (four representatives, one alternative, and four guest parents) from the Home-based and Child Care Partnership (CCP) programs and two former parents from the Home based-program. One Home-based father was nominated to serve as the Policy Council Executive Chairperson; he participated in PC meetings virtually. In addition, he attended the National Head Start conference in May 2022, which was offered virtually.

### Based on the yearly Client Satisfaction Survey

99%

IMPROVED LIFE  
OUTCOMES

100%

GOOD TO  
EXCELLENT  
OUTCOMES

100%

WOULD RECOMMEND  
OUR SERVICES TO  
OTHERS

77 Completed surveys for the program year



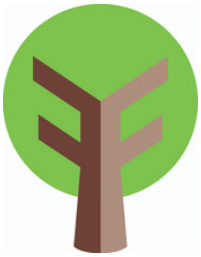
## RESULTS OF FEDERAL REVIEW AND AUDIT



### *HEAD START FEDERAL REVIEW:*

The Administration for Children and Families (ACF) conducted its last Focus Area 2 (FA2) monitoring review of the Foothill Family Service Early Head Start program options in February 2021. The program received a Head Start - Focus Area Two Monitoring Review from February 22, 2021, to February 26, 2021. No findings were reported, and the Office of Head Start (OHS) acknowledged the Foothill Family's robust Mental Health Services. Foothill Family Service was not scheduled for a Federal Review during the 2021-2022 program year.

---



### *RESULTS OF THE MOST RECENT FINANCIAL AUDIT:*

The most recent Foothill Family financial audit was completed at the end of November 2022 in accordance with all OMB A-1333 rules for annual audits as it applies to non-profit organizations. There were no findings or questioned costs. In addition, there were no material weaknesses or control deficiencies identified. The Foothill Family, financial audit results will be shared with the agency's Board of Directors and Policy Council (PC).